



USAID
FROM THE AMERICAN PEOPLE

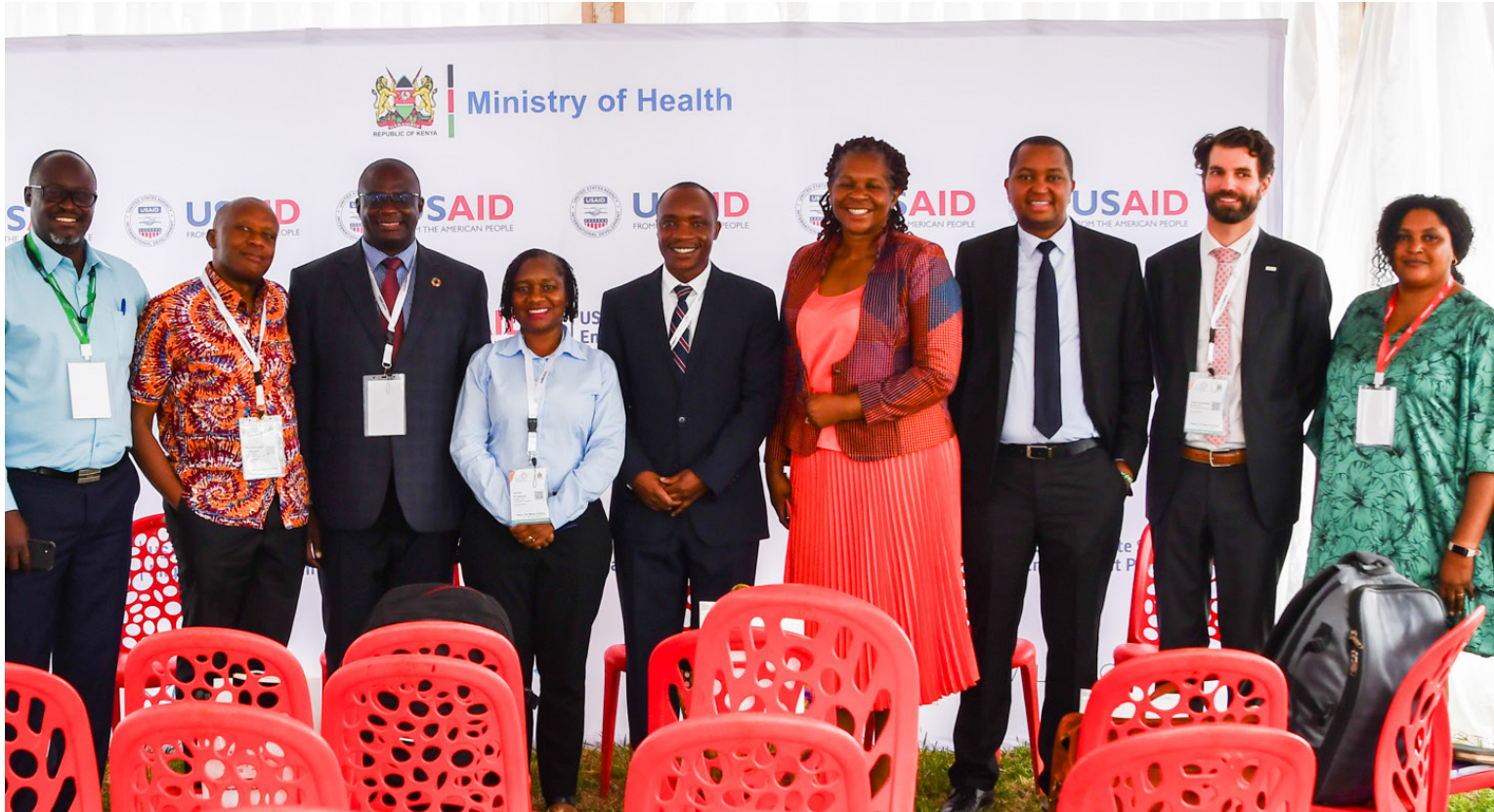


PHOTO CREDITS: PS Kenya

HOMA BAY FACT SHEET USAID PRIVATE SECTOR ENGAGEMENT PROGRAM

Homa Bay County is one of the 47 counties in the country located in Southwestern Kenya along Lake Victoria, where it borders Kisumu and Siaya counties to the North, Kisii, and Nyamira counties to the East, Migori County to the South, and Lake Victoria and the Republic of Uganda to the West. It is an ethnically homogenous county inhabited by the Luo community save for a few tribes like Abasuba-speaking people in Suba South and other ethnic communities found within the major urban centers like Oyugis, Kendu Bay, and Homa Bay municipality.

The county's capital is situated in Homa Bay municipality, which is also the most significant urban centre in terms of population. The county covers an area of 4,267.1 km² inclusive of the water surface, which on its own covers an area of 1,227 km². The county is home to the famous Ruma National Park and has 16 islands with unique flora and fauna and an impressive array of physiographic features with great aesthetic value of nature. The county is part of the 14-member Lake Region Economic Block (LREB) and a champion of Blue Economy development.

USAID PRIVATE SECTOR ENGAGEMENT INTERVENTIONS

In response to the challenges in the private sector, the USAID PSE program intends to address these by collaborating with the Ministry of Health (MOH) and the private sector to establish a coordination mechanism that will operate through health area interest TWGs and various impactful stakeholder forums. These mechanisms will be implemented through Health areas of focus – Malaria, TB, HIV, FP, MCH, and local manufacturing. USAID PSE Program in collaboration with MOH and other stakeholders in Homabay County, held county entry and follow-up meetings that pointed out major challenges facing the private sector and recommended interventions to address these challenges. The USAID PSE Program will be guided to respond to these challenges through its main sub-purposes.

GOAL ONE

Sustainable options for private sector distribution of health products and services identified, tested, and expanded.

GOAL TWO

Improved quality and efficiencies in the provision of private health sector products and services.

GOAL THREE

Support for local manufacturing of health products strengthened.

KEY AREAS OF FOCUS

- Development of the private health sector assessment tool.
- Mapping and baseline assessment of the private health sector (including chemists) on data management.
- Data analysis of findings and identifying gaps and needs.
- Train the Principal Secretary (PS) on indicator definition and integrated data capture tools.
- Support inspection, supervision, and mentorship.
- Sensitization of County Health management Team (CHMTs) and professional bodies.
- Sensitize the private health sector on updated policies, Standard Operating Procedures (SOPs), and guidelines.
- Support the PS to domesticate national policies, SOPs, and guidelines including for local manufacturing.
- Establishment of a coordination mechanism for USAID mechanism in the region (partners funded by the USAID).

CONTACT INFORMATION

Tel: +254 722 203 199 | +254 733 363 630

 info@pskenya.org  www.pskenya.org      PSKenya