



WHAT IS BINTI BIASHARA?

This is a learning program with the aim of designing adaptive tools and resources to integrate economic empowerment and sexual reproductive health education for young women in Kilifi County, Kenya.

1. ASPIRING TOGETHER

Influencers and young women build a shared mental picture and vision for how an ASHR aware and economically empowered young woman would look like and how she is beneficial to the community

2. DISCOVERY AND INCUBATION

They go through a smart start guide, and a goal setting activity. This is also an opportunity to scope potential mentors and affirm their interest in particular skills.

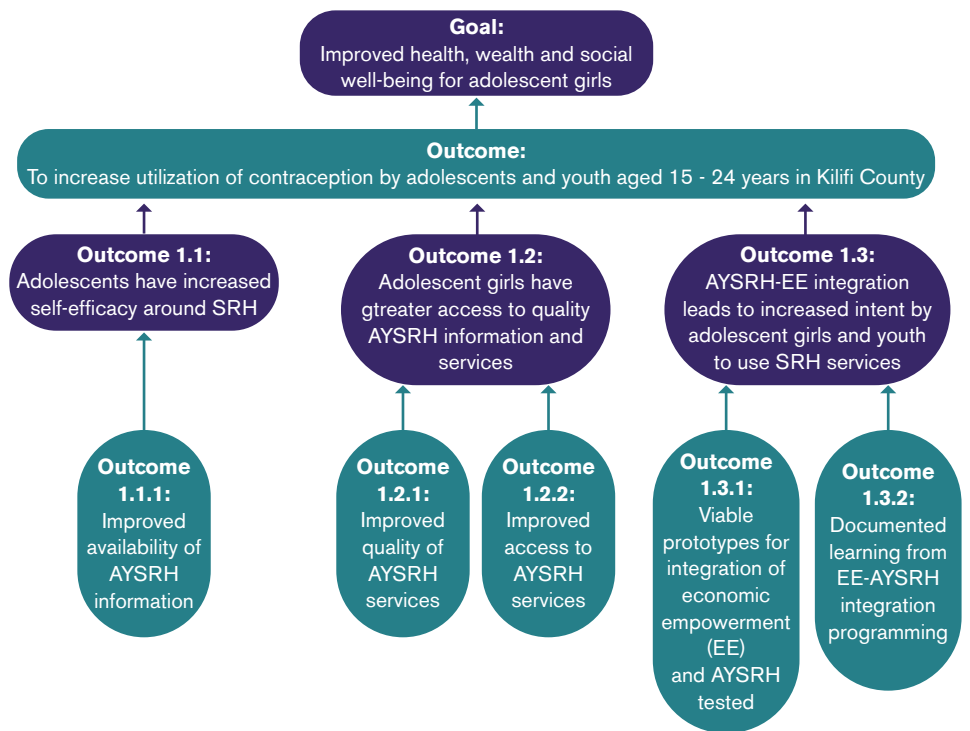
3. VOCATIONAL SKILLS APPRENTICESHIP

Young mothers go through a series of sessions that will teach them various vocational skills

4. CELEBRATION

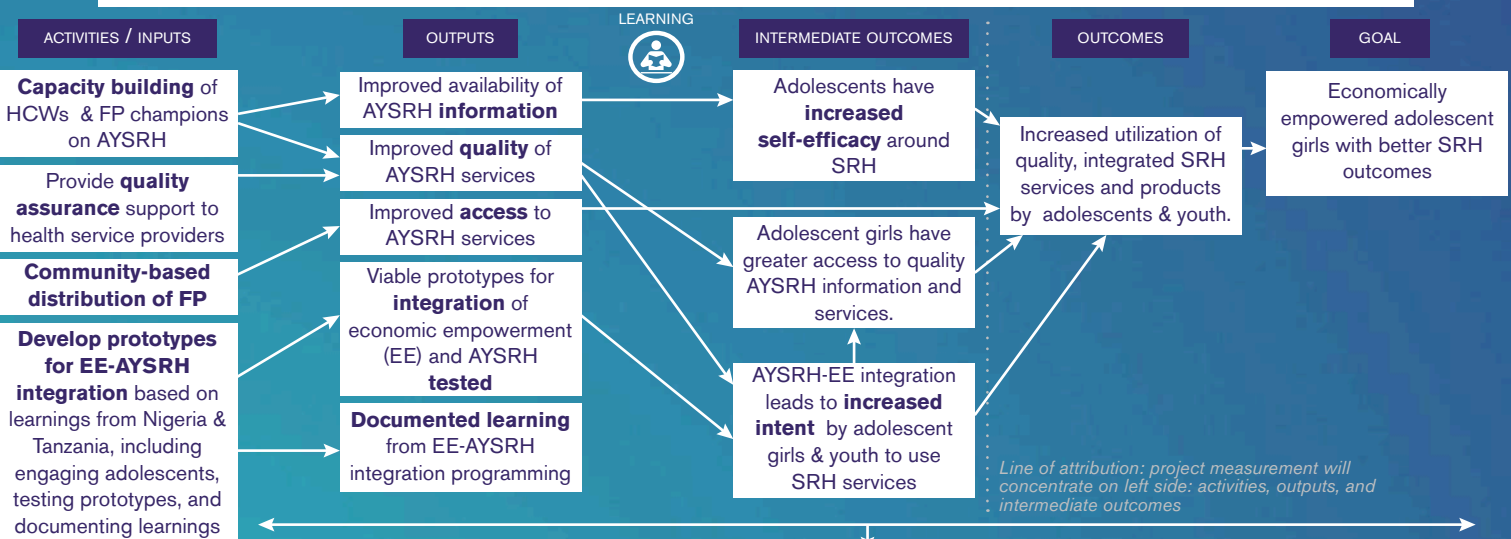
Young women are recognized for their achievements and the community is inspired by influencers to create an enabling environment for girl's EE

RESULTS FRAMEWORK



MAVERICK PROJECT THEORY OF CHANGE

HCD APPROACH USED TO DEVELOP AND TEST VIABLE MODELS FOR AYSRH - ECONOMIC EMPOWERMENT (EE) INTEGRATION



SCALABLE PROTOTYPES FOR AYSRH – ECONOMIC EMPOWERMENT (EE) INTEGRATION DEVELOPED & TESTED

